

# Hornafjörður



# Höfn í Hornafirði

- 1700 inhabitants
- 2200 in the whole municipality
- Main industry
  - Fishing and fish processing
  - Tourism
  - Service
- Höfn is the only town in the south-east of Iceland
  - Next village east of Höfn is 100 km away
  - Next village west of Höfn is 200 km away

# Höfn í Hornafirði



# Höfn í Hornafirði



# The upper secondary school (FAS) in south east Iceland

- Established 1987
- Moved to a new building 2002
- The building is a multi purpose complex
  - Our school
  - The library of the town
  - A branch of the University of Iceland
  - A consultancy for entrepreneurs
  - facility for a distance study



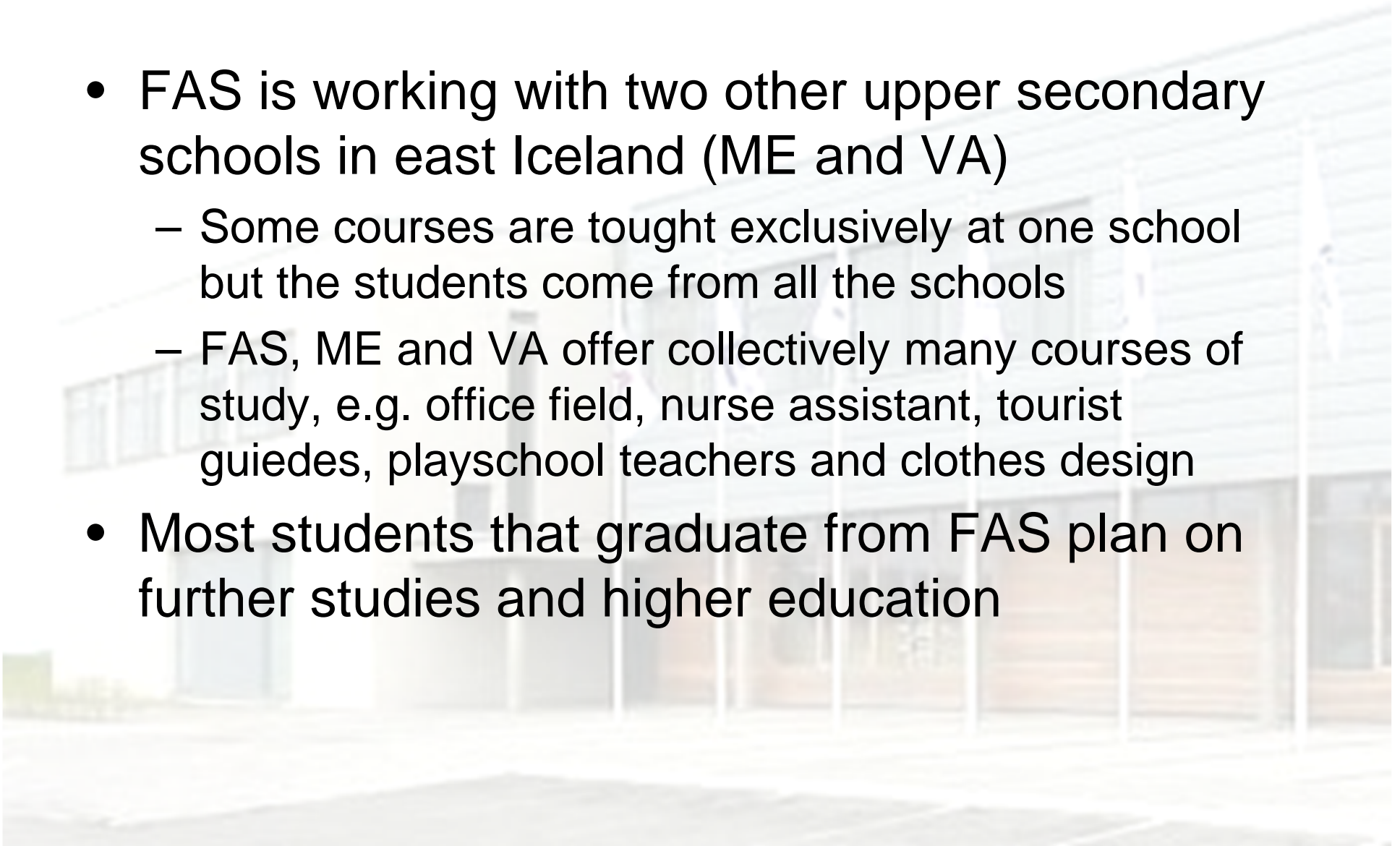


# FAS spring - 2010

- 270 pupils
  - 170 pupils attending day school – most of them between 16 – 20 years old
  - 100 distance pupils
- The main purpose of the school is to serve the community
- Students at the school can major in science, social science or languages
- The school offers special courses for sea captains and sea engineers
- Emphasis on field trips

# FAS

- FAS is working with two other upper secondary schools in east Iceland (ME and VA)
  - Some courses are taught exclusively at one school but the students come from all the schools
  - FAS, ME and VA offer collectively many courses of study, e.g. office field, nurse assistant, tourist guides, playschool teachers and clothes design
- Most students that graduate from FAS plan on further studies and higher education



# FAS

- FAS is involved in a few international projects
  - PetroChallenge international online simulation seeking and processing oil.
  - Teams from FAS are international winners in PetroChallenge 2008 and 2009
  - EEA grants
  - Commenius
  - Nordplus, countries in Iceland, Scandinavia and the Baltic

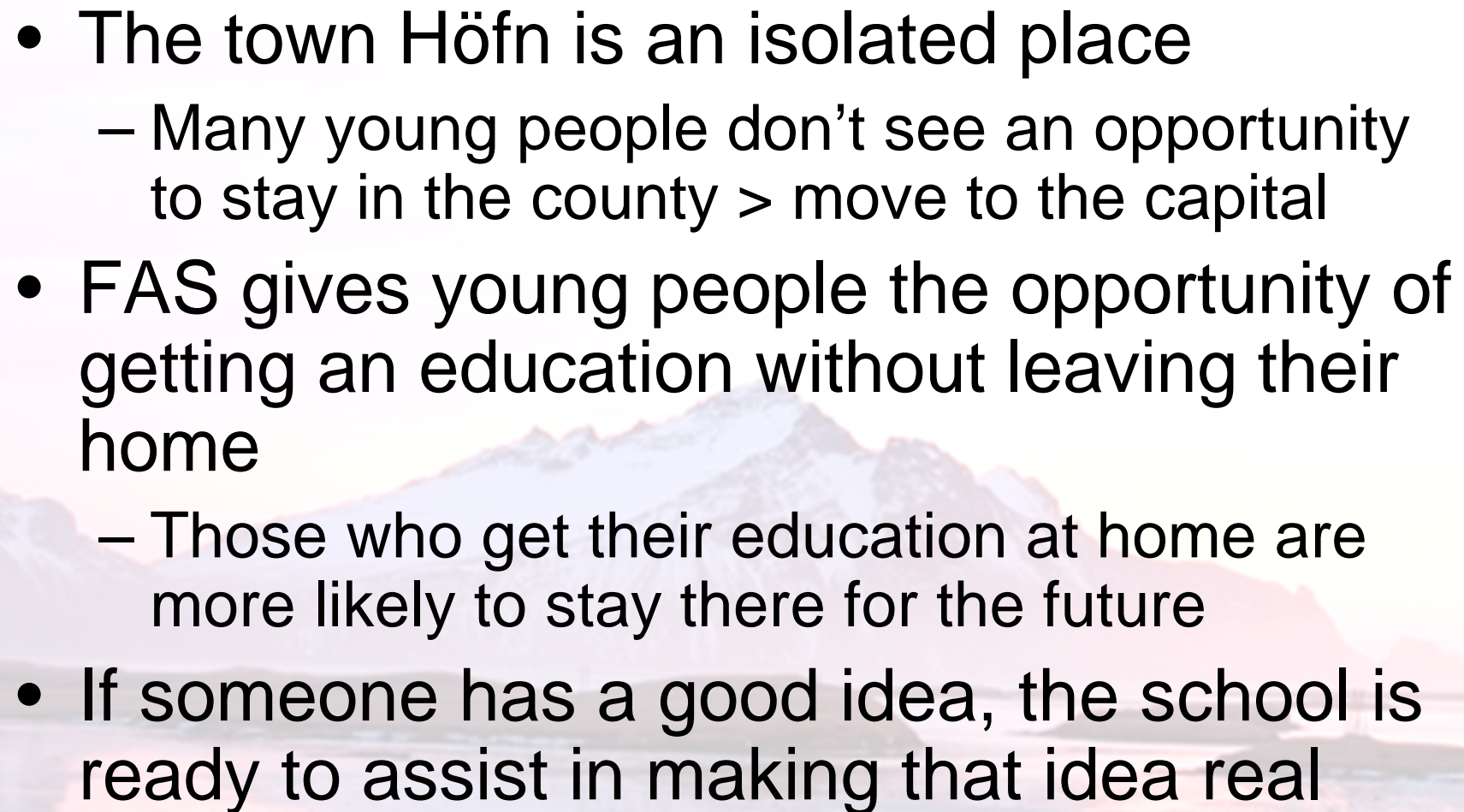




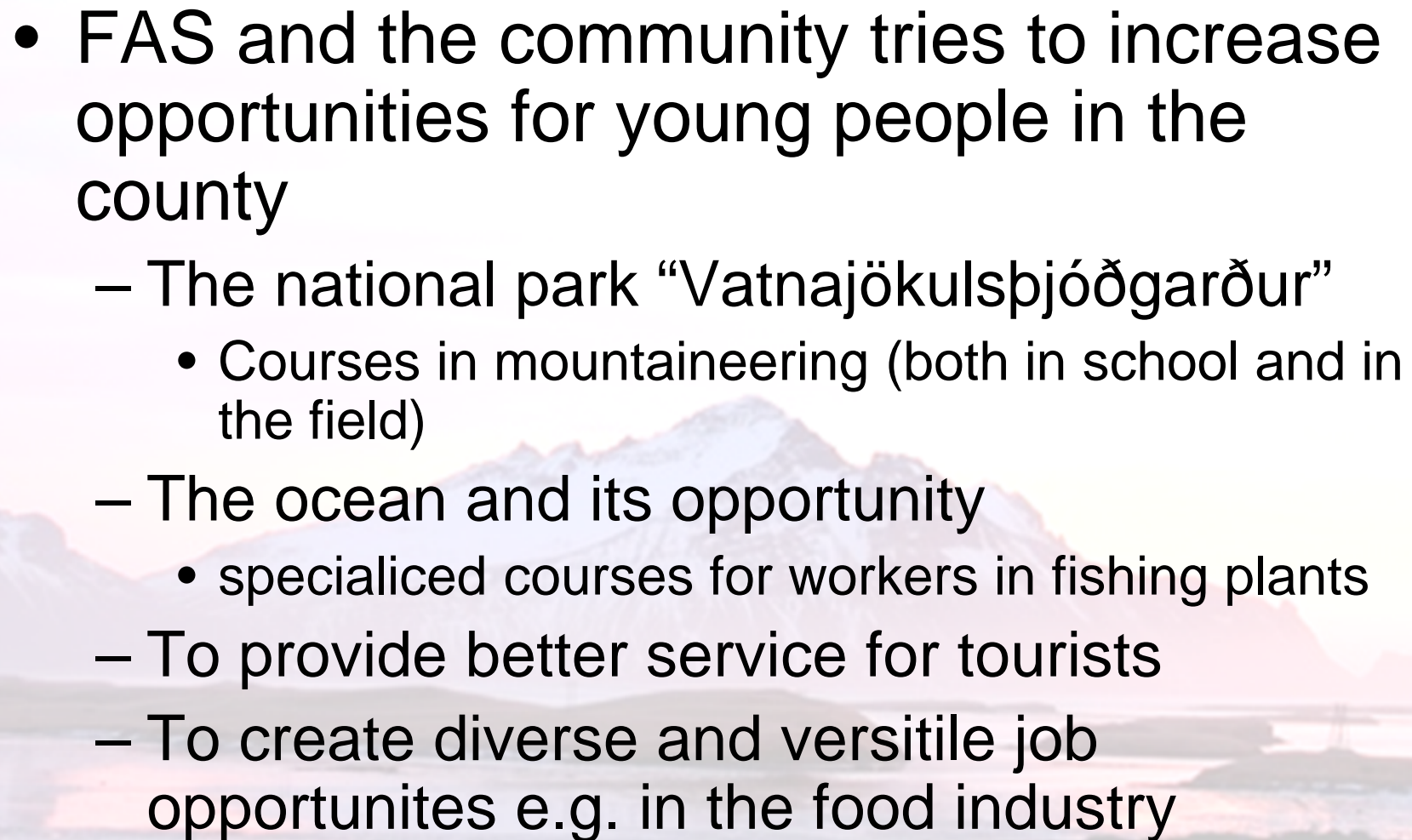
# FAS

- The social life of the students depends on their interest
- Many students are active in sport, music and acting
- A few events that are annually:
  - Busavígsla (welcoming new students to the school)
  - Kaffihúsakvöld (coffee-house evenings)
  - Gettu betur (quiz for all the secondary schools)
  - Söngkeppni (song contest for all the secondary schools)
  - Opin vika og árshátíð (open week and annual celebration)
  - Dimmision (graduating students saying good bye)



- 
- The town Höfn is an isolated place
    - Many young people don't see an opportunity to stay in the county > move to the capital
  - FAS gives young people the opportunity of getting an education without leaving their home
    - Those who get their education at home are more likely to stay there for the future
  - If someone has a good idea, the school is ready to assist in making that idea real



- 
- FAS and the community tries to increase opportunities for young people in the county
    - The national park “Vatnajökulsþjóðgarður”
      - Courses in mountaineering (both in school and in the field)
    - The ocean and its opportunity
      - specialized courses for workers in fishing plants
    - To provide better service for tourists
    - To create diverse and versatile job opportunities e.g. in the food industry

# The glacier lagoon Jökulsárlón

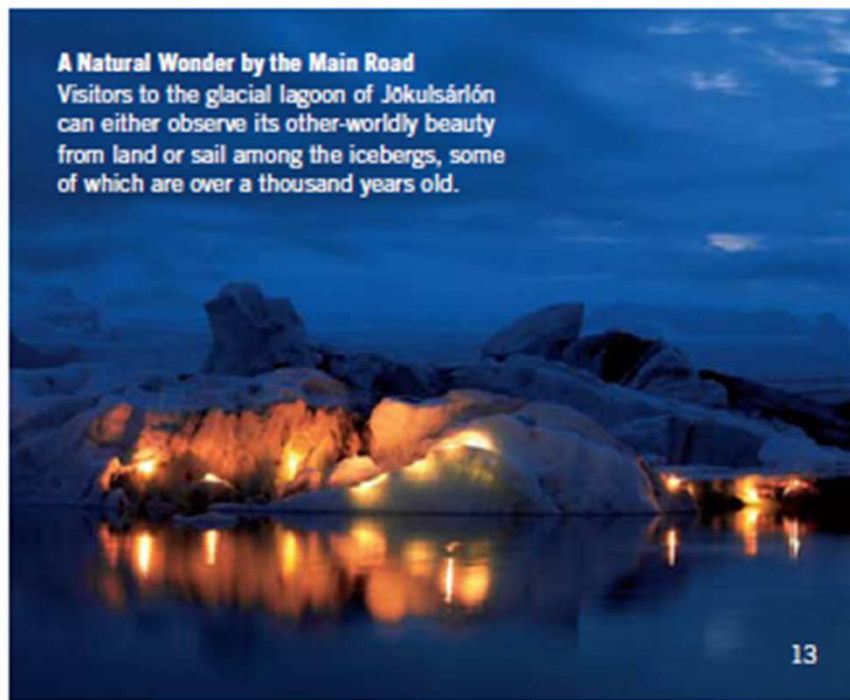


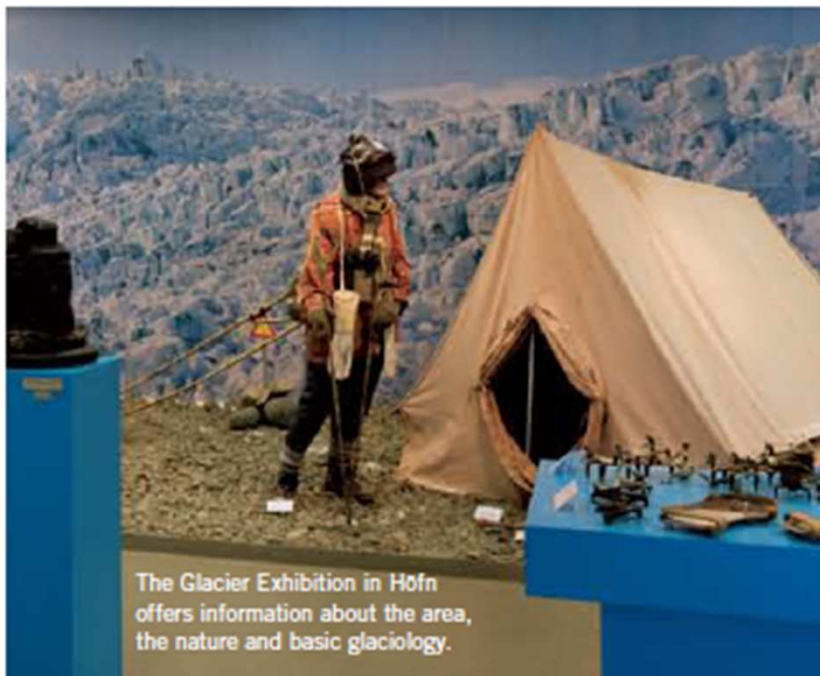




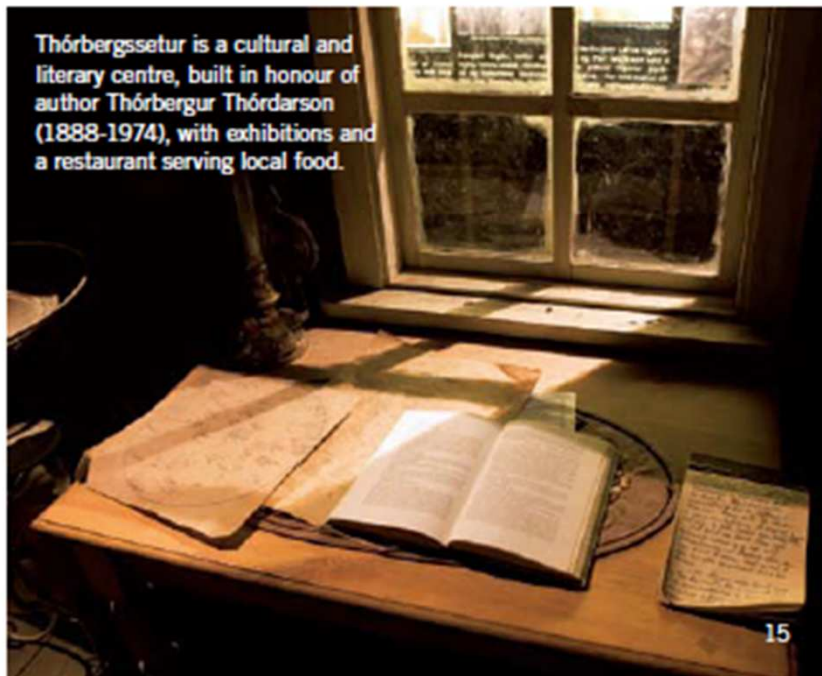
**A Natural Wonder by the Main Road**

Visitors to the glacial lagoon of Jökulsárlón can either observe its other-worldly beauty from land or sail among the icebergs, some of which are over a thousand years old.





The Glacier Exhibition in Höfn offers information about the area, the nature and basic glaciology.



Thórbergssætur is a cultural and literary centre, built in honour of author Thórbergur Thórdarson (1888-1974), with exhibitions and a restaurant serving local food.

# The Glacier Exhibition in Höfn



# THE PERFECT VANTAGE POINT

Hvannadalshnúkur, Iceland's highest peak





# Skaftafell national park



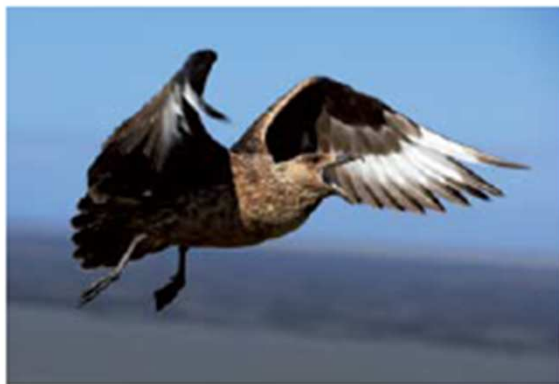


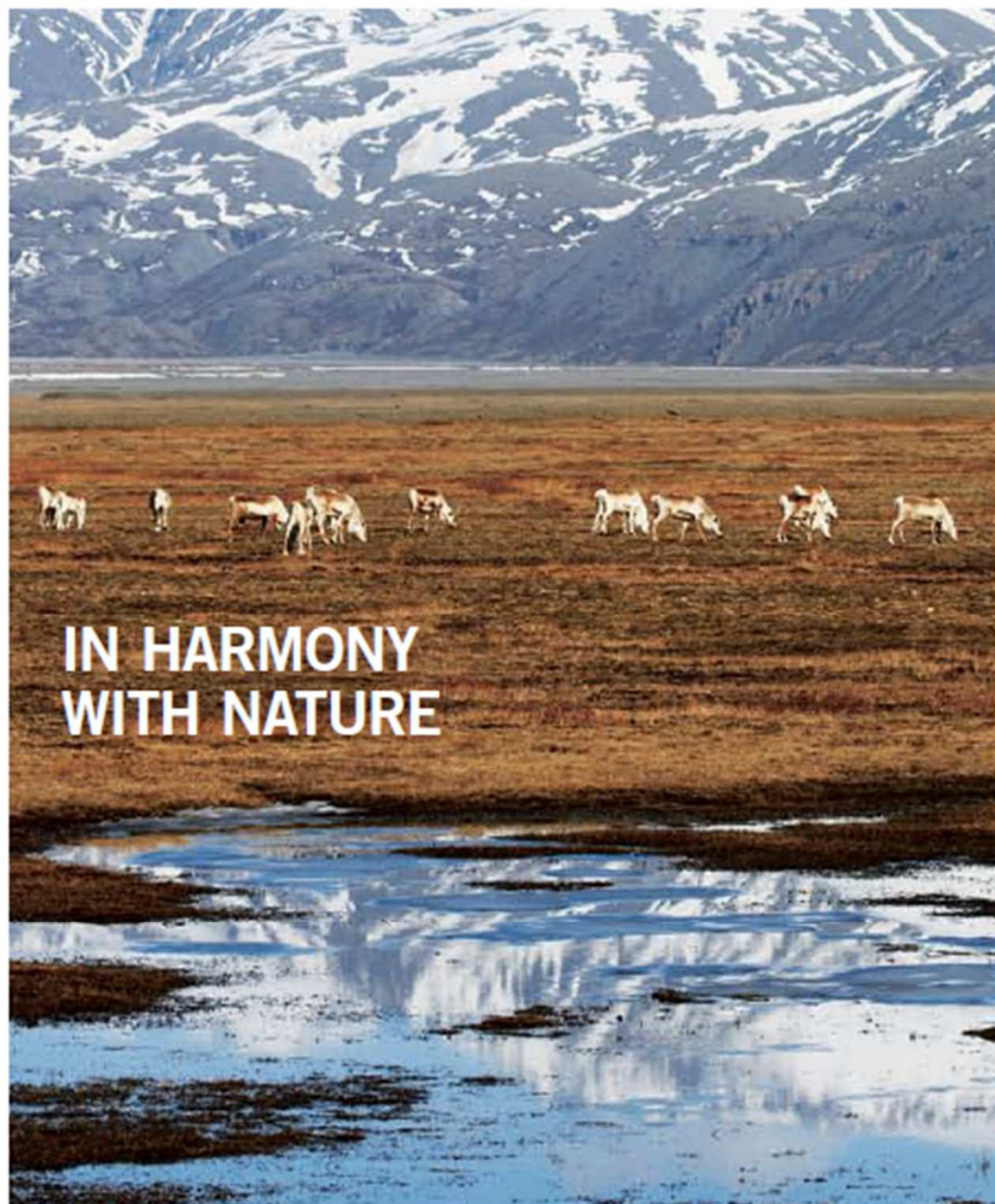
**A Metropolis of Birds**

Ingólfshöfði is home to thousands of nesting seabirds: redthroated divers, greylag geese, dunlins and, most prominently, puffins and great skuas.



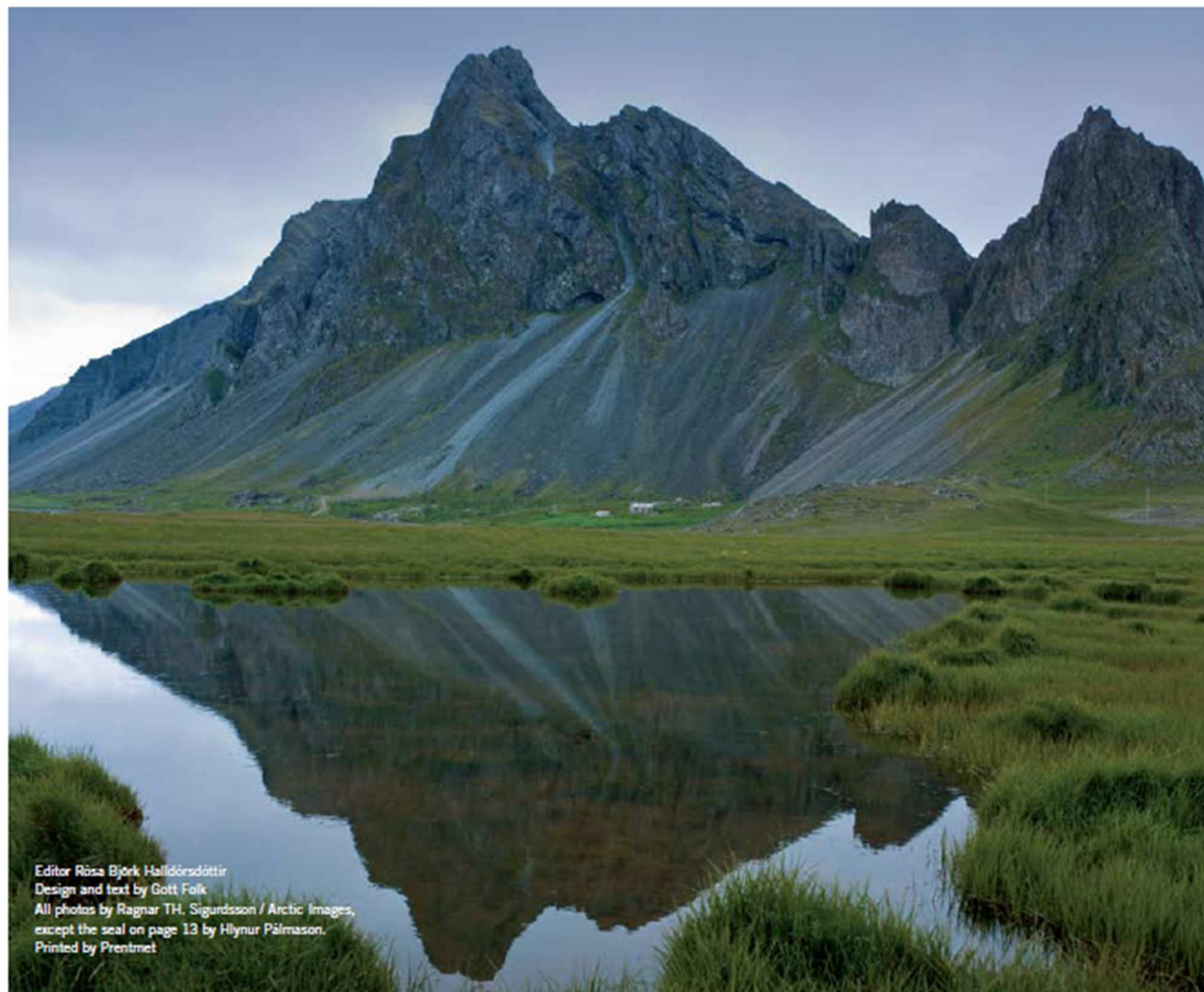
Nature provides food for the farms.





# Twilight – a view from Höfn





Editor Rósa Björk Halldórsdóttir  
Design and text by Gott Folk  
All photos by Ragnar TH. Sigurdsson / Arctic Images,  
except the seal on page 13 by Hlynur Pálmason.  
Printed by Prentnet

# Food from the province



# EDIBLE FRESHNESS

## Local Culinary Delights

The Vatnajökull region offers an embarrassment of gastronomic riches, whether it be the famous local fresh lobster or the traditional and ever-popular salt cod.

